

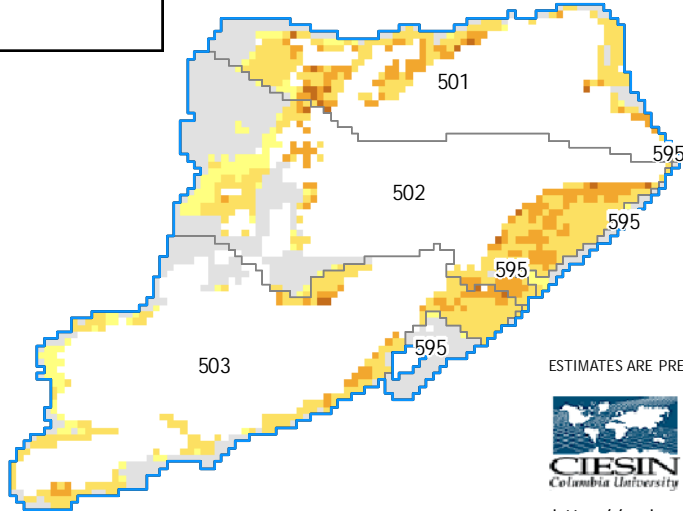
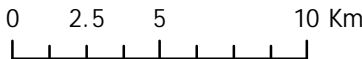
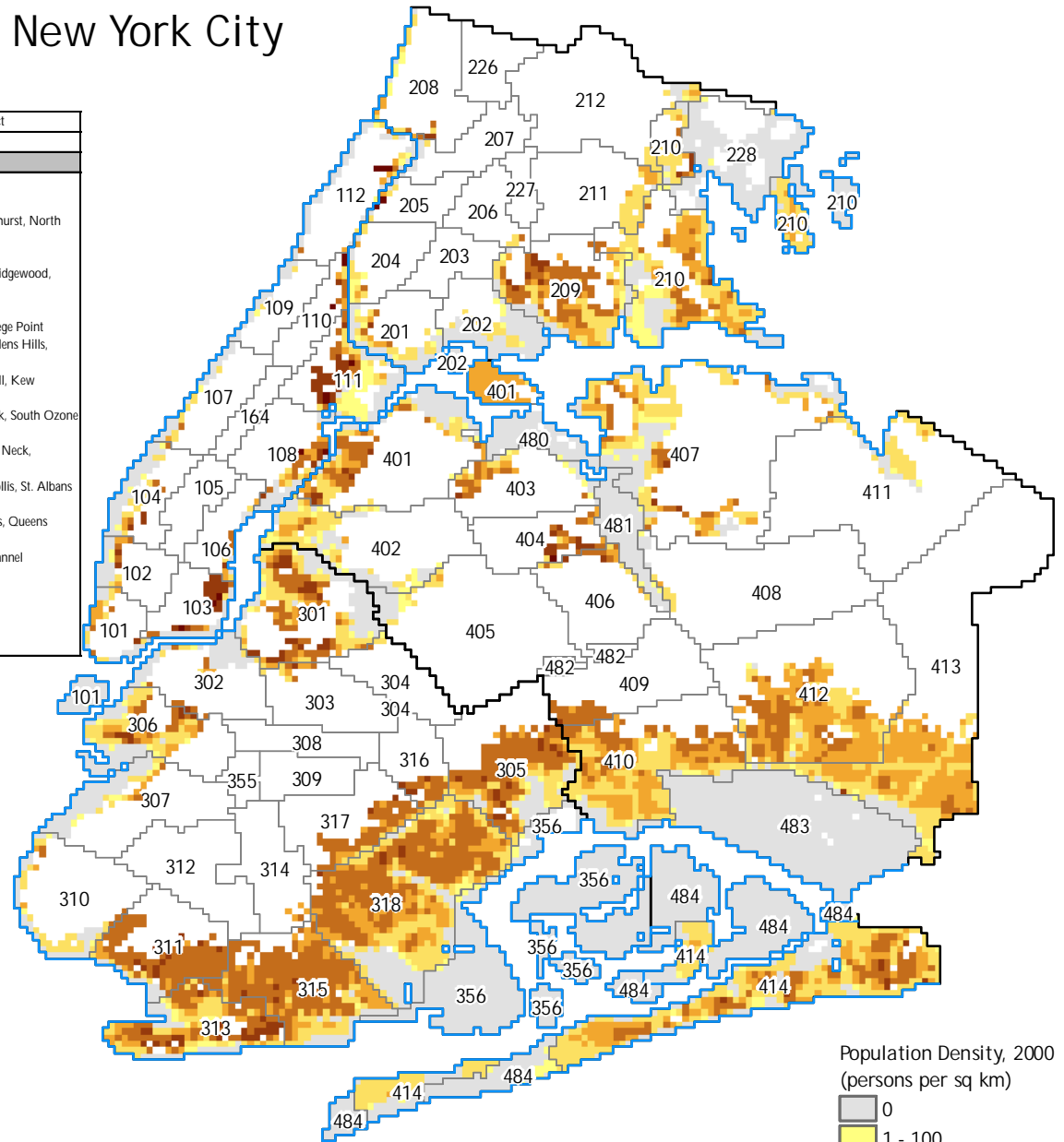
# Population Density in 10 meter Low Elevation Coastal Zone (LECZ) —

## New York City

Community District	
No.	Name
<b>Manhattan</b>	
101	Civic Center, Wall Street, Governors Island, Liberty Island, Ellis Island, Tribeca
102	Greenwich Village, Noho, Soho, Little Italy
103	Lower East Side, Chinatown, Two Bridges
104	Chelsea, Clinton
105	Midtown, Times Square, Herald Square, Midtown South
106	Murray Hill, East Midtown, Stuyvesant Town
107	Lincoln Square, Upper West Side
108	Upper East Side, Lenox Hill, Yorkville, Roosevelt Island
109	West Harlem, Morningside Heights, Manhattanville, Hamilton Heights
110	Central Harlem
111	East Harlem
112	Washington Heights, Inwood
164	Park
<b>Bronx</b>	
201	Mott Haven, Melrose, Port Morris
202	Hunts Point, Longwood
203	Melrose, Morrisania, Claremont, Crotona Park East
204	Highbridge, Concourse
205	Morris Heights, University Heights, Fordham, Mt. Hope
206	East Tremont, Bathgate, Belmont, West Farms
207	Kingsbridge Heights, Bedford Park, Fordham, University Heights
208	Kingsbridge, Riverdale, Marble Hill, Fieldston
209	Soundview, Castle Hill, Union Port, Parkchester
210	Throgs Neck, Pelham Bay, Co-op City, Westchester Square, City Island
211	Morris Park, Pelham Parkway, Bronxdale, Van Nest, Laconia
212	Williamsbridge, Baychester, Woodlawn, Wakefield, Eastchester
226	Park
227	Park
228	Park

Community District	
No.	Name
<b>Brooklyn</b>	
301	Greenpoint, Williamsburg
302	Downtown Brooklyn, Fort Greene, Brooklyn Heights, Boerum Hill
303	Bedford Stuyvesant, Tompkins Park North, Stuyvesant Heights
304	Bushwick
305	East New York, New Lots, City Line, Starrett City
306	Red Hook, Park Slope, Gowanus, Carroll Gardens, Cobble Hill
307	Sunset Park, Windsor Terrace
308	Crown Heights, Prospect Heights, Weeksville
309	Crown Heights South, Prospect Lefferts Gardens, Wingate
310	Bay Ridge, Dyker Heights, Fort Hamilton
311	Bensonhurst, Mapleton, Bath Beach, Gravesend
312	Borough Park, Ocean Parkway, Kensington
313	Coney Island, Brighton Beach, Gravesend, Homecrest, Seagate
314	Flatbush, Ocean Parkway, Midwood
315	Sheepshead Bay, Manhattan Beach, Kings Highway, Gravesend
316	Ocean Hill, Brownsville
317	Flatbush, Rugby, Farragut, Northeast Flatbush
318	Canarsie, Flatlands, Marine Park, Mill Basin, Bergen Beach
355	Park
356	Park
<b>Staten Island</b>	
501	North Island
502	Mid-Island
503	South Island
595	Park

Community District	
No.	Name
<b>Queens</b>	
401	Astoria & Long Island City
402	Sunnyside & Woodside
403	Jackson Heights, East Elmhurst, North Corona
404	Elmhurst & Corona
405	Maspeth, Middle Village, Ridgewood, Glendale
406	Rego Park & Forest Hills
407	Flushing, Whitestone, College Point
408	Fresh Meadows, Kew Gardens Hills, Jamaica Hills
409	Woodhaven, Richmond Hill, Kew Gardens
410	Howard Beach, Ozone Park, South Ozone Park
411	Bayside, Douglaston, Little Neck, Auburndale
412	Jamaica, South Jamaica, Hollis, St. Albans
413	Laurelton, Cambria Heights, Queens Village, Glen Oaks
414	The Rockaways, Broad Channel
480	Airport
481	Park
482	Park
483	Airport
484	Park

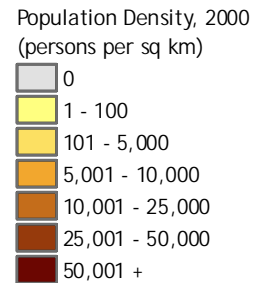


ESTIMATES ARE PRELIMINARY



<http://sedac.ciesin.columbia.edu/gpw/lec2.jsp>

- Area outside of 10 meter LECZ
- NYC coastline
- Borough Boundary
- Community District Boundary



This document is licensed under a Creative Commons 2.5 Attribution License <http://creativecommons.org/licenses/by/2.5/>