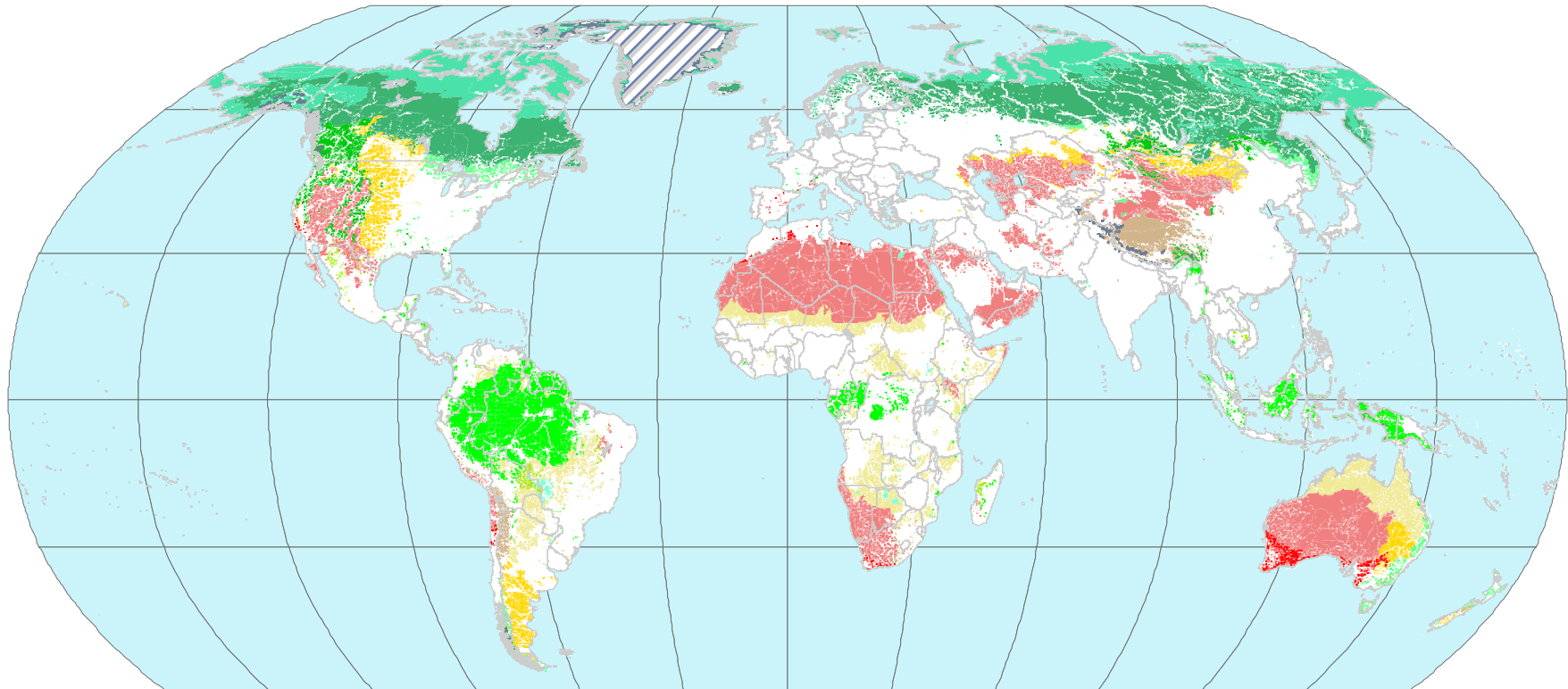


Last of the Wild ver. 2

Global

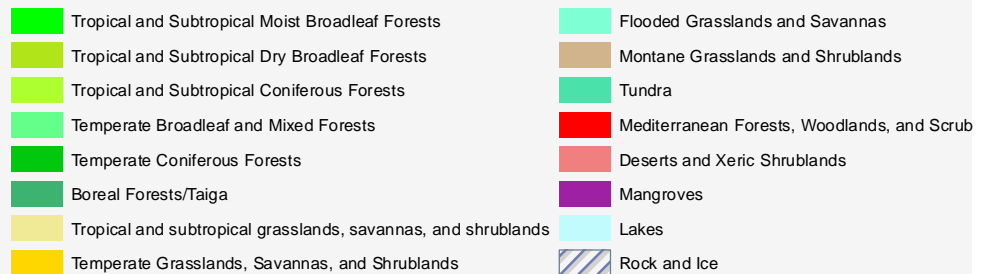


Robinson Projection

Last of the Wild

The Last of the Wild represents the least influenced (most wild) areas of major terrestrial biomes. Most wild in each biome are defined as areas with Human Footprint Index values less than or equal to 10. The map shows the distribution of what remains the least influenced areas in each biome.

Last of the Wild in each terrestrial biomes



Copyright 2008. The Trustees of Columbia University in the City of New York.
 Source: Center for International Earth Science Information Network (CIESIN), Columbia University and Wildlife Conservation Society, the Bronx Zoo, New York. The Last of the Wild Data set. Available at <http://www.sedac.ciesin.columbia.edu/wildareas>

Publication Date: 03/07/08



This document is licensed under a
 Creative Commons 2.5 Attribution License
<http://creativecommons.org/licenses/by/2.5/>