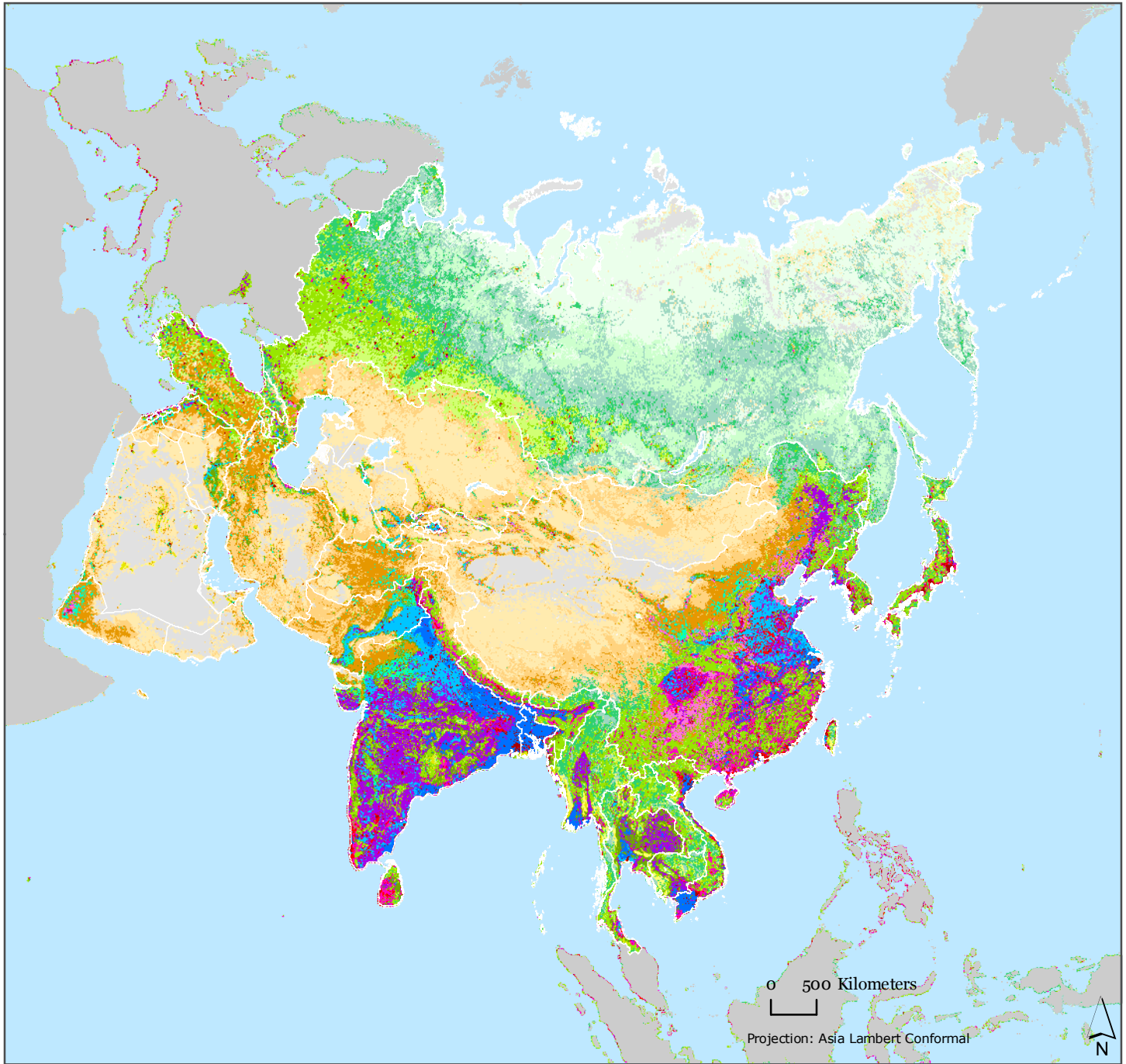


Anthropogenic Biomes v1

Asia



Anthropogenic Biomes

Anthropogenic biomes represent heterogeneous landscape mosaics defined by population density and vegetation cover. The 21 biomes are grouped into six major categories namely dense settlements, villages, croplands, rangeland, forested and wildlands.

Anthropogenic Biomes

11: Urban	26: Rainfed mosaic villages	42: Populated rangelands
12: Dense settlements	31: Residential irrigated cropland	43: Remote rangelands
21: Rice villages	32: Residential rainfed mosaic	51: Populated forests
22: Irrigated villages	33: Populated irrigated cropland	52: Remote forests
23: Cropped & pastoral villages	34: Populated rainfed cropland	61: Wild forests
24: Pastoral villages	35: Remote croplands	62: Sparse trees
25: Rainfed villages	41: Residential rangelands	63: Barren

Copyright 2009. The Trustees of Columbia University in the City of New York.
 Source: Ellis, E. C. and N. Ramankutty. 2008. Putting people in the map: anthropogenic biomes of the world. <http://ecotope.org/anthromes/>
 Data distributed by the Socioeconomic Data and Applications Center (SEDAC):
<http://sedac.ciesin.columbia.edu/es/anthropogenicbiomes.html>.



Publication Date: 02/5/09



This document is licensed under a
 Creative Commons 3.0 Attribution License
<http://creativecommons.org/licenses/by/3.0/>