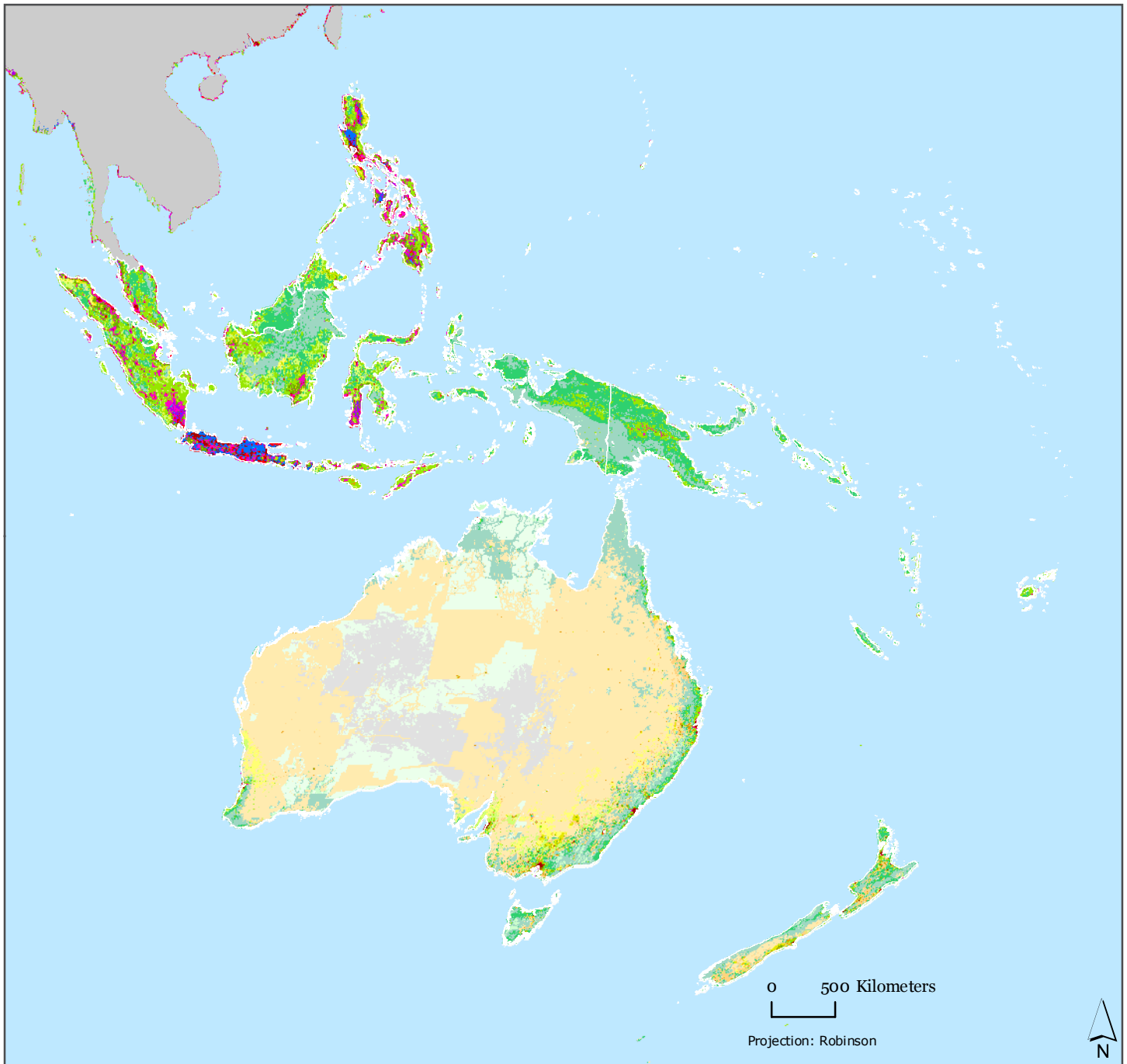


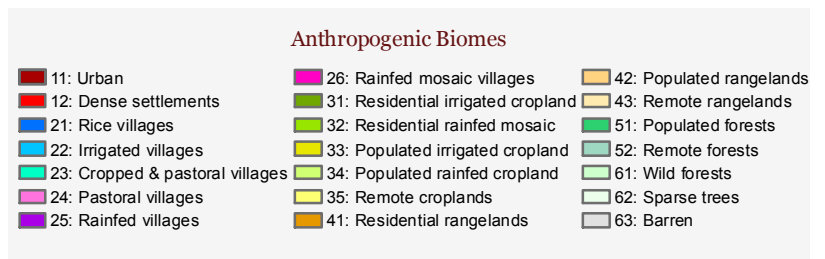
Anthropogenic Biomes

Oceania



Anthropogenic Biomes

Anthropogenic biomes represent heterogeneous landscape mosaics defined by population density, land use, biota, climate, terrain and geology. The 21 biomes are grouped into six major categories namely dense settlements, villages, croplands, rangeland, forested and wildlands.



Copyright 2009. The Trustees of Columbia University in the City of New York.
Source: Ellis, E. C. and N. Ramankutty. 2008. Putting people in the map: anthropogenic biomes of the world. Data distributed by the Socioeconomic Data and Applications Center (SEDAC): <http://sedac.ciesin.columbia.edu/es/anthropogenicbiomes.html>.

Publication Date: 02/5/09



This document is licensed under a Creative Commons 3.0 Attribution License
<http://creativecommons.org/licenses/by/3.0/>